

KABISA

Electric Vehicle Brochure





ABOUT KABISA

Kabisa is electric vehicle distributor and EV ecosystem company in Rwanda. Kabisa has the vision to make electric vehicle adoption and ownership in Rwanda as easy as possible. Besides selling or leasing the electric vehicles from the world most reputable EV manufacturers, Kabisa is also operating a nationwide EV charging network and runs an electric vehicle maintenance garage in Kigali.

Kabisa is the smart choice for any fleet operator looking to reduce total cost of ownership while shifting to a modern, green fleet. Kabisa's vehicles come by default with charging infrastructure and fully integrated fleet management system.

WHY GO FULL ELECTRIC?

90%

Reduction in fuel cost

80%

Reduction in direct maintenance costs and less vehicle downtime

100%

Carbon emission reductions while driving comfortably and silent

**Cost-effective,
Instant Return
on Investment**

KABISA SERVICES

BUSINESS & HOME CHARGING

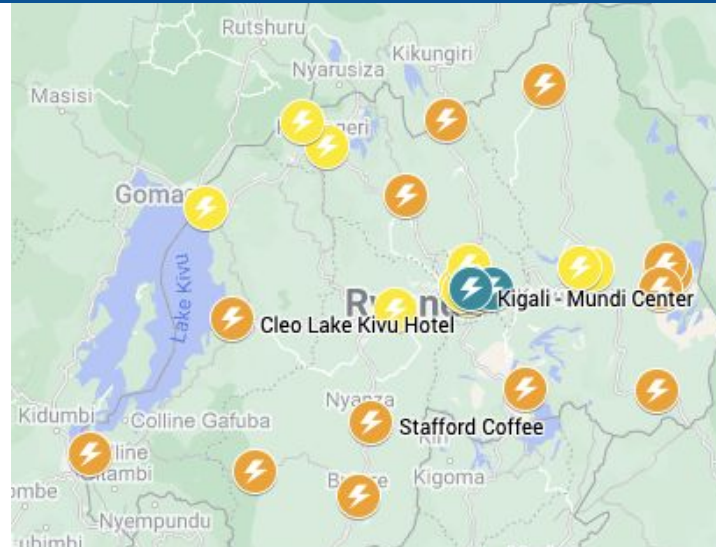


- Free charger installation at your home or business alongside each car
- Selection of slow and fast chargers available including professional installation services.

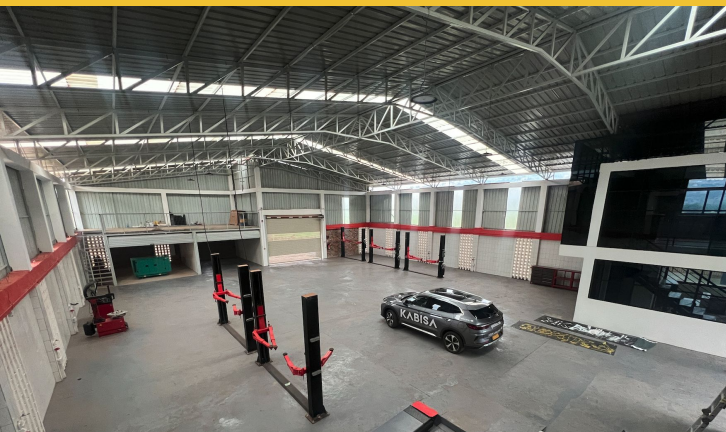
Charging NETWORK



All Kabisa customers have access to the Kabisa charging network (see map or [Google Maps](#))



KABISA EV GARAGE



- Kabisa is operating an EV and Hybrid vehicle garage in Kigali. ([Google Maps](#))
- The garage is equipped with special battery diagnostics and maintenance tools.

KABISA FLEET



COMMUTER
120 / 170 km



JEP
305 km



VOYAGER
305 km



PRO
320 / 410 km



LUX
520 / 605 km



PICKUP
410 / 550 km



VAN
280 km



CARGO (3.5T)
250 km



LIGHT DUTY (5.5 & 8T)
250 km

GO: WULING MINI EV



Make/Model	Wuling Mini EV	
Trim	Macaron 170km	Macaron 215km
NEDC Range	170km	215km
Battery Size	13.4 kWh	17.3 kWh
Motor	Single Motor, Rear Wheel Drive	
Horsepower/ Torque	27 hp (20 kW)/ 85Nm	41 hp (30kW)/ 92Nm
Top Speed	100 km/h	
Max Charging	AC 3.3kW (6.8 hrs)	AC 3.3kW (7h)/ DC 16kW (1h)
Consumption (kWh /100km)	8.0	9.0
Cost 100km (94 RWF /kWh)	752	846
Body Arrangement	3-door 4-seat, Foldable back seats	
L×W×H(mm)	2917x1493x1621	
Curb Weight	715 kg	777 kg
Luggage Volume/ Max Load	734 L with folded seats/ 380kg	734 L with folded seats/ 318kg
Tires	145/70 R12	
Parking Camera	Sensor	Camera
Safety Features	ABS, Brake Assist, Transaction Control, Stability Control, Tire Pressure Monitoring, Seat Belts, Front Airbags	
Features	Hill assist, 8inch touch screen	
Exterior Color		
Interior Color		




JEP: BAOJUN JEP

304 KM

28.1 kWh



Make/Model	Baojun Yep	
Trim	Basic Version	Pro Version
NEDC Range	303 km	
Battery Size	28.1 kWh	
Motor	Single Motor - Rear Wheel Drive	
Horsepower / Torque (kW)	68 hp (49 kW) 310 N - M	
Top Speed	100 km/h	
Charging Speed	DC 30 kW (1 hr) / AC 6.6 kW (5 hrs)	
Consumption (kWh /100km)	9.3 kWh	
Cost 100km (94 RWF /kWh)	872 RWF	
Body Arrangement	4 seats, 3 doors, foldable back seats	
L×W×H(mm) // Ground Clearance	3381x1685x1721 // 150mm	
Weight	1,006 kg	
Luggage Volume	30 L	
Tires	195/60 R15	
Safety Features	Airbags, ABS anti-lock brake, Traction Control, Tire Pressure Monitoring, ISO	
Additional Features	Touch LCD Screen, Rear Camera	Touch LCD Screen, 360deg Cameras Adaptive Cruise Control Parking Assistance Lane Departure Warning, Front and Rear Collision Warning, Lane Keeping Assistance, Active Braking and Traffic Sign Recognition
Exterior Color		
Interior Color		



Voyager

305 KM

30.08 kWh



Make/Model	Voyager: BYD Seagull	
Trim	Basic Version	Pro Version
NEDC Range	305 km	
Battery Size	30.08 kWh	
Motor	Single Motor - Rear Wheel Drive	
Horsepower / Torque (kW)	74hp (55 kW) 135 N - M	
Top Speed	130 km/h	
Charging Speed	DC 30 kW (0.5 hr) / AC 6.6 kW (5 hrs)	
Consumption (kWh /100km)	9.3 kWh	
Cost 100km (94 RWF /kWh)	872 RWF	
Body Arrangement	4 seats, 5 doors, foldable back seats	
L×W×H(mm) // Ground Clearance	3780x1715x1540 // 155mm	
Weight	1,090 kg	
Luggage Volume	30 L	
Tires	195/60 R15	
Safety Features	Airbags, ABS anti-lock brake, Electronic Parking Brake System, Tire Pressure Monitoring, ISO	
Additional Features	Touch LCD Screen, Rear Camera	Touch LCD Screen, Adaptive Cruise Control Parking Assistance Lane Departure Warning, Front and Rear Collision Warning, Active Braking and Traffic Sign Recognition



PRO: BYD YUAN PRO



320/410 KM

38/48 kWh

Make/Model	BYD Yuan Pro		
Trim	Basic	Basic Extended Range	Premium
NEDC Range	320 km	401 km	401 km
Battery Size	38 kWh	48 kWh	48 kWh
Motor	Single Motor - Rear Wheel Drive		
Horsepower / Torque (kW)	68 hp (70 kW) 180 N - M		
Top Speed (km/h)	150 km/h		
Max Charging	DC 45 kW (0.5 hr) / AC 6.6 kW (5 hrs)	DC 60kW (0.5 hr) / AC 6.6 kW (5 hrs)	
Consumption (kWh /100km)	11.9	12.0	
Cost 100km (94 RWF /kWh)	1128 RWF		
Body Arrangement	5 seats, 5 doors		
L×W×H (mm)	4375x1785x1680		
Ground Clearance (mm)	150		
Curb Weight	~1,300	1510	1510
Tires	205/60 R16		
Safety Features	Driver & Passenger Airbags, ABS anti-lock brake, Traction Control, Tire Pressure Monitoring, ISO, Rear Parking Radar		
Additional Features	Rear View Camera USB phone charging 2 speakers	Rear View Camera USB phone charging 4 speakers	Panoramic Sunroof Side Airbags 360 deg Camera Wireless phone charging Front parking radar Car Air Purifier 6 speakers Vehicle 2 Load Capability Electric Folding Mirrors
Exterior Color			
Interior Color			



PICK UP: RADAR R6



63 / 86 kWh

410 / 505 KM

Make/Model	Geely Radar R6	
NEDC Range	410 km	550 km
Battery Size	63 kWh	86 kWh
Motor	Single Motor - Rear Wheel Drive	
Horsepower / Torque (kW)	272 hp (200 kW) 384 N - M	
Top Speed	185 km/hr	
Max Charging	DC 120 kW (30 mins) / AC 3.3 kW (19 hrs)	
Charge Cost (@94rwf/kWh)	6,016 RWF	8,084 RWF
Consumption	14.1 kWh / 100km / (est. 1,325 RWF)	15.6 kWh/100km/ (est 1,467 RWF)
Body Arrangement	5-door 5-seat \ Foldable back seats	
L×W×H(mm)	5260x1900x1830	
Weight	2840 kg	
Luggage Volume	450kg ; Frunk 70L - 6kw power outlet; V2V charging	
Tires	225/65 17L	
Display	TFT screen	
Parking Camera	Camera	
Safety Features	Airbags, ABS anti-lock brake, Traction Control, Tire Pressure Monitoring, ISO Add on: lane departure warning, front and rear collision warning, lane keeping assistance, active braking and traffic sign recognition	



LUX: BYD SONG PLUS EV

520/605 KM



Make/Model	BYD Song Plus		
Trim	Luxury	Premium	Flagship Plus
NEDC Range (km)	520 km	520 km	602 km
Battery Size (kWh)	71.8 kWh	71.8 kWh	90.3 kWh
Motor	Single Motor - Front Wheel Drive		
Motor Horsepower	204 hp	204 hp	218 hp
Top Speed (km/h)	175 km/hr		
Max Charging	DC 90 kW (30 mins) / AC 7 kW (10.2 hrs)	DC 90 kW (30 mins) / AC 7 kW (10.2 hrs)	DC 140 kW (28 mins) / AC 7 kW (12.4 hrs)
Consumption (kWh /100km)	13.8 kWh	13.8 kWh	15.1 kWh
Cost 100km (94 RWF /kWh)	1311 RWF	1311 RWF	1434 RWF
Body Arrangement	5-door 5-seat \ Foldable back seats		
L×W×H (mm)	4705x1890x1680		
Weight	1920 kg	1920 kg	2050 kg
Luggage Volume	574 L		
Tires	245/45 R19		
Safety Features	Airbags, Child Seat Interface, ABS anti-lock brake, Traction Control, Tire Pressure Monitoring, ISO		
Additional Features	Panoramic Sunroof, Rear Camera, 12.8 inch touch screen, 6 speakers	Panoramic Sunroof, Surround Cameras, 12.8 inch Touch Screen, 9 Speakers, Soundproof Windshield	Panoramic Sunroof, 15.6 inch Touch Screen 10 Speakers, Soundproof Windshield, Car Air Purifier, Lane Departure Warning, Lane Keep Assistant, Active Breaking, Front & Rear Collision Warning
Exterior Color			
Interior Color			



VAN: FARIZON V6E



260KM

41.86 kWh

Make/Model	Farizon V6E Van
NEDC Range	260 km (210 KM fully loaded)
Battery Size	41.86 kWh
Motor	Single Motor - Rear Wheel Drive
Horsepower / Torque (kW)	82 hp (60 kW) 220 N-M
Top Speed	90 km/h
Max Charging	DC 40 kW (1 hr) / AC 6.6 kW (8 hrs)
Charge Cost (@94rwf/kWh)	3,950 RWF
Consumption	16.1 kWh / 100 km (1,515 RWF)
Body Arrangement	2 Seats, 4 doors
L×W×H(mm) // Ground Clearance	4845 x 1730 x 1985 // 125mm
Vehicle Weight	1,490 kg
Cargo Volume // Cargo Weight	6 m ³ // 1,510 kg
Tires	185/75 R14
Display	No
Parking Camera	No
Safety Features	ABS anti-lock brake, Traction Control, Tire Pressure Monitoring, ISO



CARGO: FARIZON F3E



250KM 55.7 kWh

Make/Model	Farizon F3E with Cargo box
NEDC Range	250 km
Battery Size	55.7 kWh
Motor	Single Motor - Rear Wheel Drive
Horsepower / Torque (kW)	82 hp (60 kW) 220 N - M
Top Speed	110 km/h
Max Charging	DC 50 kW (1.5 hr) / AC 6.6 kW (9 hrs)
Charge Cost (@94rwf/kWh)	5,250 RWF
Consumption	21.5 kWh / 100 km (2,025 RWF)
Body Arrangement	2 seats, 3 doors
L×W×H(mm) // Ground Clearance	5965×1800×2630(3820 cargo box) // 125mm
Vehicle Weight	2000 kg
Cargo Volume // Cargo Weight	11 m ³ // 1,495 kg
Tires	185/75 R15
Display	No
Parking Camera	No
Safety Features	ABS anti-lock brake, Traction Control, Tire Pressure Monitoring, ISO

Large Capacity

Cost-efficient

3700mm extra-long cargo compartment

Industry-leading cargo space for ultra efficient loading



The ladder frame design and the use of 510L girder steel make the vehicle light-weighted while durable.

3600mm extra-long wheelbase



With up to 1.5 tons of front axle and 185R15 high bearing capacity radial tires, the loading capacity is comparable to that of a light truck.

8 | Farizon F3E

High Quality

Intelligent, efficient, safe and reliable

Equipped with multi-function steering wheel, full touchscreen multimedia system and more smart assistance to relieve fatigue and improve efficiency.

8+9-inch dual diaphragm vacuum booster.

The front disc and rear brake are equipped with brake clearance self-adjustment function.

ABS+EBD makes the brake feel firm under foot, while effectively improving the brake safety and stability.

LIGHT DUTY: FARIZON XZ 5.5T & 8T



250KM

100.7 kWh

Make/Model	Farizon XZ H8E (Short Wheelbase)	Farizon XZ H9E (Short Wheelbase)
NEDC Range	150 km	260 km
Battery Size	100.46 kWh	162 kWh
Motor	Single Motor - Rear Wheel Drive	Single Motor - Rear Wheel Drive
Horsepower / Torque (kW)	82 hp (120 kW) 220 N - M	82 hp (120 kW) 220 N - M
Top Speed	90 km/h	90 km/h
Max Charging	DC 50 kW (1 hr) / AC 6.6 kW (9 hrs)	DC 50 kW (1 hr) / AC 6.6 kW (9 hrs)
Charge Cost (@94rwf/kWh)	9,443.24 RWF	15,288 RWF
Consumption	66.97 kWh / 100 km (6,295.49 RWF)	62.3 kWh / 100 km (5,856.92 RWF)
Body Arrangement	3 seats, 3 doors	3 seats, 3 doors
L×W×H(mm) // Ground Clearance	5995×2200×3130 // 125mm	5995×2500×3300 // 125mm
Vehicle Weight	5500 kg	7995 kg
Cargo Volume // Cargo Weight	21 m ³ // 2,400 kg	21 m ³ // 3,995 kg
Tires	215/75 R16	215/75 R16
Display	No	No
Parking Camera	No	No
Safety Features	ABS anti-lock brake, Traction Control, Tire Pressure Monitoring, ISO	ABS anti-lock brake, Traction Control, Tire Pressure Monitoring, ISO

01 Trendy Design



Modern Aesthetics

- Integrating grille headlights into the front end
- Equipped with LED daytime driving lights
- Integrated air deflector with the same height of the cargo case reducing to 0.54 drag coefficient

Central Control

- 12.1-inch high-definition central controls media, 360 outdoor view and truck functions
- Equipped with truck version navigation with truck-specific route planning and reminders

Comfortable Interior

- Interior design with grace, comfort and energy-efficiency
- 10° cushion tilt and 59.5° steering wheel tilt for optimal long-distance driving experience
- Dial shift for simple and smooth operation

02 Extra-large Capacity



High-strength Steel

- High-strength steel makes the truck 5% lighter

Optimal EIC System

- Equipped with CATL LFP battery with grouping efficiency of 85% to 90%
- Equipped with a battery cooling system to enable reliable fast-charge in high temperatures
- Industry-leading range with 162.28kWh battery capacity

03 Safety Guaranteed



Comprehensive Safety Functions

- Equipped with high-definition camera with 2D/3D panoramic view
- Automatic emergency power-off and unlocking protection to prevent secondary damages

Reliable Hardware

- Tested reliability and durability in high temperature and mountainous areas
- Dual airbags and seatbelt pretensioner for multiple insurance