

# KABISA

## Electric Vehicle Brochure





# ABOUT KABISA

Kabisa is electric vehicle distributor and EV ecosystem company in Rwanda. Kabisa has the vision to make electric vehicle adoption and ownership in Rwanda as easy as possible. Besides selling or leasing the electric vehicles from the world most reputable EV manufacturers, Kabisa is also operating a nationwide EV charging network and runs an electric vehicle maintenance garage in Kigali.

Kabisa is the smart choice for any fleet operator looking to reduce total cost of ownership while shifting to a modern, green fleet. Kabisa's vehicles come by default with charging infrastructure and fully integrated fleet management system.

## WHY GO FULL ELECTRIC?

90%

Reduction in fuel cost

80%

Reduction in direct maintenance costs and less vehicle downtime

100%

Carbon emission reductions while driving comfortably and silent

**Cost-effective,  
Instant Return  
on Investment**

# KABISA SERVICES

## BUSINESS & HOME CHARGING

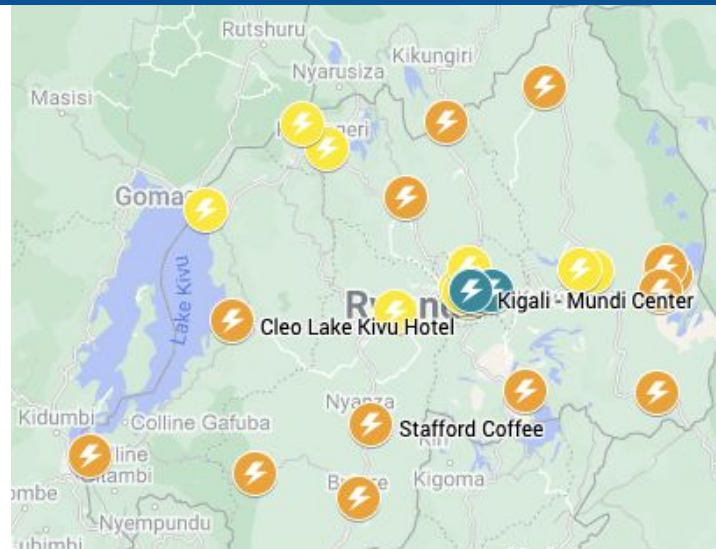


- Free charger installation at your home or business alongside each car
- Selection of slow and fast chargers available including professional installation services.

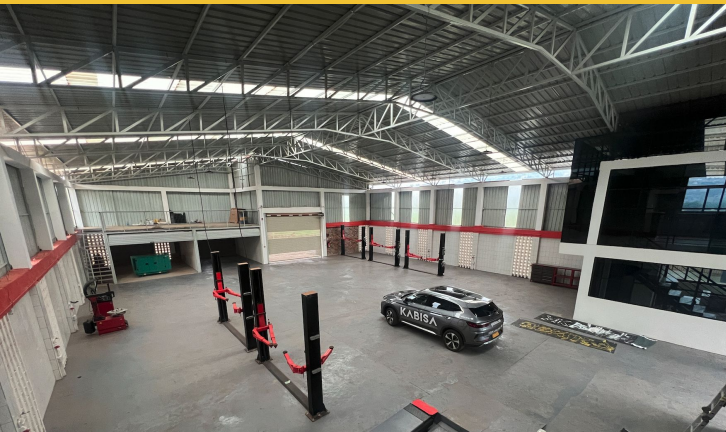
## Charging NETWORK



All Kabisa customers have access to the Kabisa charging network (see map or [Google Maps](#))



## KABISA EV GARAGE



- Kabisa is operating an EV and Hybrid vehicle garage in Kigali. ([Google Maps](#))
- The garage is equipped with special battery diagnostics and maintenance tools.

# KABISA FLEET



**COMMUTER**  
120 / 170 km



**JEP**  
305 km



**VOYAGER**  
305 km



**PRO**  
320 / 410 km



**LUX**  
520 / 605 km



**PICKUP**  
410 / 550 km



**VAN**  
280 km



**CARGO (3.5T)**  
250 km



**LIGHT DUTY (5.5 & 8T)**  
250 km

# JEP: BAOJUN JEP

## 304 KM

## 28.1 kWh



<b>Make/Model</b>	Baojun Yep	
<b>Trim</b>	Basic Version	Pro Version
<b>NEDC Range</b>	303 km	
<b>Battery Size</b>	28.1 kWh	
<b>Motor</b>	Single Motor - Rear Wheel Drive	
<b>Horsepower / Torque (kW)</b>	68 hp (49 kW) 310 N - M	
<b>Top Speed</b>	100 km/h	
<b>Charging Speed</b>	DC 30 kW (1 hr) / AC 6.6 kW (5 hrs)	
<b>Consumption (kWh /100km)</b>	9.3 kWh	
<b>Cost 100km (94 RWF /kWh)</b>	872 RWF	
<b>Body Arrangement</b>	4 seats, 3 doors, foldable back seats	
<b>L×W×H(mm) // Ground Clearance</b>	3381x1685x1721 // 150mm	
<b>Weight</b>	1,006 kg	
<b>Luggage Volume</b>	30 L	
<b>Tires</b>	195/60 R15	
<b>Safety Features</b>	Airbags, ABS anti-lock brake, Traction Control, Tire Pressure Monitoring, ISO	
<b>Additional Features</b>	Touch LCD Screen, Rear Camera	Touch LCD Screen, 360deg Cameras Adaptive Cruise Control Parking Assistance Lane Departure Warning, Front and Rear Collision Warning, Lane Keeping Assistance, Active Braking and Traffic Sign Recognition
<b>Exterior Color</b>		
<b>Interior Color</b>		





# PRO: BYD YUAN PRO



320/410 KM

38/48 kWh

<b>Make/Model</b>	BYD Yuan Pro		
<b>Trim</b>	Basic	Basic Extended Range	Premium
<b>NEDC Range</b>	320 km	401 km	401 km
<b>Battery Size</b>	38 kWh	48 kWh	48 kWh
<b>Motor</b>	Single Motor - Rear Wheel Drive		
<b>Horsepower / Torque (kW)</b>	68 hp (70 kW) 180 N - M		
<b>Top Speed (km/h)</b>	150 km/h		
<b>Max Charging</b>	DC 45 kW (0.5 hr) / AC 6.6 kW (5 hrs)	DC 60kW (0.5 hr) / AC 6.6 kW (5 hrs)	
<b>Consumption (kWh /100km)</b>	11.9	12.0	
<b>Cost 100km (94 RWF /kWh)</b>	1128 RWF		
<b>Body Arrangement</b>	5 seats, 5 doors		
<b>L×W×H (mm)</b>	4375x1785x1680		
<b>Ground Clearance (mm)</b>	150		
<b>Curb Weight</b>	~1,300	1510	1510
<b>Tires</b>	205/60 R16		
<b>Safety Features</b>	Driver & Passenger Airbags, ABS anti-lock brake, Traction Control, Tire Pressure Monitoring, ISO, Rear Parking Radar		
<b>Additional Features</b>	Rear View Camera USB phone charging 2 speakers	Rear View Camera USB phone charging 4 speakers	Panoramic Sunroof Side Airbags 360 deg Camera Wireless phone charging Front parking radar Car Air Purifier 6 speakers Vehicle 2 Load Capability Electric Folding Mirrors
<b>Exterior Color</b>			
<b>Interior Color</b>			





# PICK UP: RADAR R6



63 / 71.7 kWh

410 / 505 KM

<b>Make/Model</b>	Geely Radar R6
<b>NEDC Range</b>	410 km or 550 km
<b>Battery Size</b>	63 kWh
<b>Motor</b>	Single Motor - Rear Wheel Drive
<b>Horsepower / Torque (kW)</b>	272 hp (200 kW) 384 N - M
<b>Top Speed</b>	185 km/hr
<b>Max Charging</b>	DC 120 kW (30 mins) / AC 3.3 kW (19 hrs)
<b>Charge Cost (@94rwf/kWh)</b>	6,016 RWF
<b>Consumption</b>	14.1 kWh / 100km / (est. 1,325 RWF)
<b>Body Arrangement</b>	5-door 5-seat \ Foldable back seats
<b>L×W×H(mm)</b>	5260x1900x1830
<b>Weight</b>	2840 kg
<b>Luggage Volume</b>	450kg ; Frunk 70L - 6kw power outlet; V2V charging
<b>Tires</b>	225/65 17L
<b>Display</b>	None (optional add-on)
<b>Parking Camera</b>	None (optional add-on)
<b>Safety Features</b>	Airbags, ABS anti-lock brake, Traction Control, Tire Pressure Monitoring, ISO <b>Add on:</b> lane departure warning, front and rear collision warning, lane keeping assistance, active braking and traffic sign recognition



# LUX: BYD SONG PLUS EV

## 520/605 KM



Make/Model	BYD Song Plus		
Trim	Luxury	Premium	Flagship Plus
NEDC Range (km)	520 km	520 km	602 km
Battery Size (kWh)	71.8 kWh	71.8 kWh	90.3 kWh
Motor	Single Motor - Front Wheel Drive		
Motor Horsepower	204 hp	204 hp	218 hp
Top Speed (km/h)	175 km/hr		
Max Charging	DC 90 kW (30 mins) / AC 7 kW (10.2 hrs)	DC 90 kW (30 mins) / AC 7 kW (10.2 hrs)	DC 140 kW (28 mins) / AC 7 kW (12.4 hrs)
Consumption (kWh /100km)	13.8 kWh	13.8 kWh	15.1 kWh
Cost 100km (94 RWF /kWh)	1311 RWF	1311 RWF	1434 RWF
Body Arrangement	5-door 5-seat \ Foldable back seats		
L×W×H (mm)	4705x1890x1680		
Weight	1920 kg	1920 kg	2050 kg
Luggage Volume	574 L		
Tires	245/45 R19		
Safety Features	Airbags, Child Seat Interface, ABS anti-lock brake, Traction Control, Tire Pressure Monitoring, ISO		
Additional Features	Panoramic Sunroof, Rear Camera, 12.8 inch touch screen, 6 speakers	Panoramic Sunroof, Surround Cameras, 12.8 inch Touch Screen, 9 Speakers, Soundproof Windshield	Panoramic Sunroof, 15.6 inch Touch Screen 10 Speakers, Soundproof Windshield, Car Air Purifier, Lane Departure Warning, Lane Keep Assistant, Active Breaking, Front & Rear Collision Warning
Exterior Color			
Interior Color			



# VAN: FARIZON V6E



260KM

41.86 kWh

<b>Make/Model</b>	Farizon V6E Van
<b>NEDC Range</b>	260 km (210 KM fully loaded)
<b>Battery Size</b>	41.86 kWh
<b>Motor</b>	Single Motor - Rear Wheel Drive
<b>Horsepower / Torque (kW)</b>	82 hp (60 kW) 220 N-M
<b>Top Speed</b>	90 km/h
<b>Max Charging</b>	DC 40 kW (1 hr) / AC 6.6 kW (8 hrs)
<b>Charge Cost (@94rwf/kWh)</b>	3,950 RWF
<b>Consumption</b>	16.1 kWh / 100 km (1,515 RWF)
<b>Body Arrangement</b>	2 Seats, 4 doors
<b>L×W×H(mm) // Ground Clearance</b>	4845 x 1730 x 1985 // 125mm
<b>Vehicle Weight</b>	1,490 kg
<b>Cargo Volume // Cargo Weight</b>	6 m <sup>3</sup> // 1,510 kg
<b>Tires</b>	185/75 R14
<b>Display</b>	No
<b>Parking Camera</b>	No
<b>Safety Features</b>	ABS anti-lock brake, Traction Control, Tire Pressure Monitoring, ISO



# CARGO: FARIZON F3E



## 250KM 55.7 kWh

<b>Make/Model</b>	Farizon F3E with Cargo box
<b>NEDC Range</b>	250 km
<b>Battery Size</b>	55.7 kWh
<b>Motor</b>	Single Motor - Rear Wheel Drive
<b>Horsepower / Torque (kW)</b>	82 hp (60 kW) 220 N - M
<b>Top Speed</b>	110 km/h
<b>Max Charging</b>	DC 50 kW (1.5 hr) / AC 6.6 kW (9 hrs)
<b>Charge Cost (@94rwf/kWh)</b>	5,250 RWF
<b>Consumption</b>	21.5 kWh / 100 km (2,025 RWF)
<b>Body Arrangement</b>	2 seats, 3 doors
<b>L×W×H(mm) // Ground Clearance</b>	5965×1800×2630(3820 cargo box) // 125mm
<b>Vehicle Weight</b>	2000 kg
<b>Cargo Volume // Cargo Weight</b>	11 m <sup>3</sup> // 1,495 kg
<b>Tires</b>	185/75 R15
<b>Display</b>	No
<b>Parking Camera</b>	No
<b>Safety Features</b>	ABS anti-lock brake, Traction Control, Tire Pressure Monitoring, ISO

# Large Capacity

# Cost-efficient

3700mm extra-long cargo compartment

Industry-leading cargo space for ultra efficient loading



The ladder frame design and the use of 510L girder steel make the vehicle light-weighted while durable.

3600mm extra-long wheelbase



With up to 1.5 tons of front axle and 185R15 high bearing capacity radial tires, the loading capacity is comparable to that of a light truck.

8 | Farizon F3E

# High Quality

Intelligent, efficient, safe and reliable

Equipped with multi-function steering wheel, full touchscreen multimedia system and more smart assistance to relieve fatigue and improve efficiency.

8+9-inch dual diaphragm vacuum booster.

The front disc and rear brake are equipped with brake clearance self-adjustment function.

ABS+EBD makes the brake feel firm under foot, while effectively improving the brake safety and stability.



# LIGHT DUTY: FARIZON XZ 5.5T & 8T



250KM

100.7 kWh

Make/Model	Farizon XZ H8E (Short Wheelbase)	Farizon XZ H9E (Short Wheelbase)
NEDC Range	150 km	260 km
Battery Size	100.46 kWh	162 kWh
Motor	Single Motor - Rear Wheel Drive	Single Motor - Rear Wheel Drive
Horsepower / Torque (kW)	82 hp (120 kW) 220 N - M	82 hp (120 kW) 220 N - M
Top Speed	90 km/h	90 km/h
Max Charging	DC 50 kW (1 hr) / AC 6.6 kW (9 hrs)	DC 50 kW (1 hr) / AC 6.6 kW (9 hrs)
Charge Cost (@94rwf/kWh)	9,443.24 RWF	15,288 RWF
Consumption	66.97 kWh / 100 km (6,295.49 RWF)	62.3 kWh / 100 km (5,856.92 RWF)
Body Arrangement	3 seats, 3 doors	3 seats, 3 doors
L×W×H(mm) // Ground Clearance	5995×2200×3130 // 125mm	5995×2500×3300 // 125mm
Vehicle Weight	5500 kg	7995 kg
Cargo Volume // Cargo Weight	21 m <sup>3</sup> // 2,400 kg	21 m <sup>3</sup> // 3,995 kg
Tires	215/75 R16	215/75 R16
Display	No	No
Parking Camera	No	No
Safety Features	ABS anti-lock brake, Traction Control, Tire Pressure Monitoring, ISO	ABS anti-lock brake, Traction Control, Tire Pressure Monitoring, ISO

# 01 Trendy Design



## Modern Aesthetics

- Integrating grille headlights into the front end
- Equipped with LED daytime driving lights
- Integrated air deflector with the same height of the cargo case reducing to 0.54 drag coefficient

## Central Control

- 12.1-inch high-definition central controls media, 360 outdoor view and truck functions
- Equipped with truck version navigation with truck-specific route planning and reminders

## Comfortable Interior

- Interior design with grace, comfort and energy-efficiency
- 10° cushion tilt and 59.5° steering wheel tilt for optimal long-distance driving experience
- Dial shift for simple and smooth operation

# 02 Extra-large Capacity



## High-strength Steel

- High-strength steel makes the truck 5% lighter

## Optimal EIC System

- Equipped with CATL LFP battery with grouping efficiency of 85% to 90%
- Equipped with a battery cooling system to enable reliable fast-charge in high temperatures
- Industry-leading range with 162.28kWh battery capacity

# 03 Safety Guaranteed



## Comprehensive Safety Functions

- Equipped with high-definition camera with 2D/3D panoramic view
- Automatic emergency power-off and unlocking protection to prevent secondary damages

## Reliable Hardware

- Tested reliability and durability in high temperature and mountainous areas
- Dual airbags and seatbelt pretensioner for multiple insurance